



July 1, 2019

**ADDENDUUM ACKNOWLEDGEMENT FORM
ITB 2018-2019-03 ADDENDUM #1**

Proposal No: ITB 2018-2019-03

Proposal Title: Artificial Turf and Netting for Indoor Batting Facility

Proposal Due Date: July 17, 2019 2:00 p.m. CST

Questions Due Date: July 10, 2019 4:30 p.m. CST

Proposal Opening: July 17, 2019 2:00 p.m. CST

PLEASE BE ADVISED THAT THE FOLLOWING CHANGES ARE APPLICABLE TO THE ORIGINAL SPECIFICATIONS OF THE ABOVE-REFERENCED ITB:

This addendum includes the following:

RESPONSE TO WITTEN QUESTIONS RECEIVED:

1. Question: Are there plans for this ITB?

Response: Yes, plans attached to addendum.

THIS ADDENDUM NOW BECOMES A PART OF THE ORIGINAL ITB.

THE ADDENDUM ACKNOWLEDGMENT FORM SHALL BE SIGNED BY AN AUTHORIZED COMPANY REPRESENTATIVE, DATED AND RETURNED WITH THE RESPONSE.

COMPANY NAME: _____

AUTHORIZED SIGNATURE: _____ DATE: _____

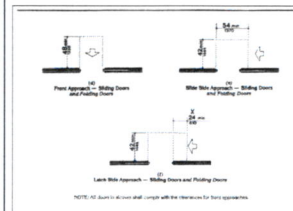


Fig. 41
Narrowing Clearances at Doors (Continued)

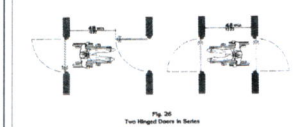


Fig. 42
Minimum Clearances for Swinging and Sliding

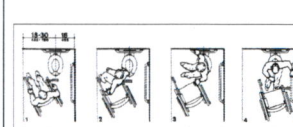
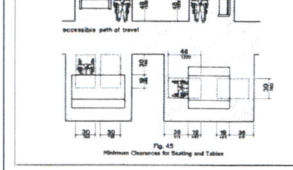


Fig. 44
Wheelchair Transfers

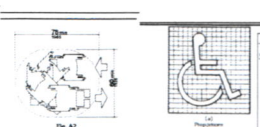
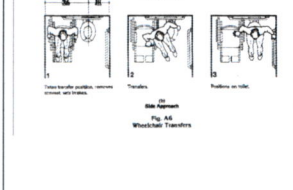


Fig. 46
Space Needed for Smooth 90 Turn in a Wheelchair

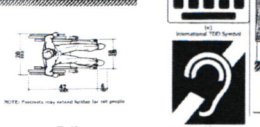
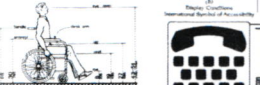


Fig. 49
International Symbol of Access for Hearing Loss



Fig. 50
Clear Floor Space for Wheelchair Approach



Fig. 51
High and Low Clearances for Wheelchair

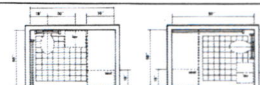


Fig. 52
Reduction in Wheelchair Clearance



Fig. 53
Side Reach



Fig. 54
Dimensions of Parking Spaces



Fig. 55
Vertical Curvature of Road Surface



Fig. 56
Universal Parking Space Design



Fig. 57
Parking Safety Accessories

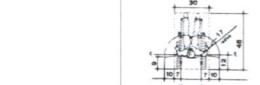


Fig. 58
Wheelchair Clearance at Parking



Fig. 59
Wheelchair Clearance at Parking



Fig. 60
Wheelchair Clearance at Parking

Fig. 60
Wheelchair Clearance at Parking

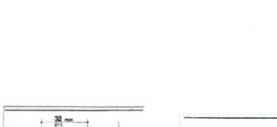


Fig. 1
Minimum Clear Width for Single Wheelchair

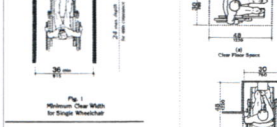


Fig. 2
Minimum Clear Width for Two Wheelchairs



Fig. 3
Minimum Clear Width for Two Wheelchairs

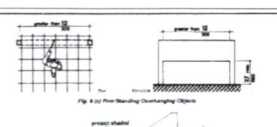


Fig. 4
Additional Maneuvering Clearance for Access

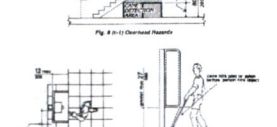


Fig. 5
Wheelchair Clearance at Access



Fig. 6
Wheelchair Clearance at Access

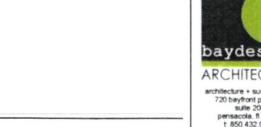


Fig. 7
Clear Floor Space for Access

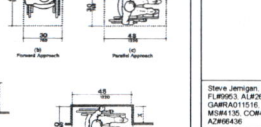


Fig. 8
Clear Floor Space for Access

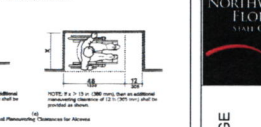


Fig. 9
Clear Floor Space for Access



Fig. 10
Clear Floor Space for Access

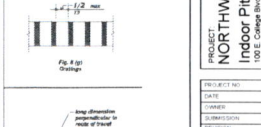


Fig. 11
Clear Floor Space for Access



Fig. 12
Clear Floor Space for Access



Fig. 13
Wheelchair Clearance at Parking

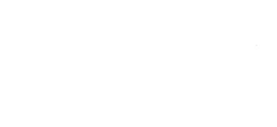


Fig. 14
Wheelchair Clearance at Parking



Fig. 15
Wheelchair Clearance at Parking



Fig. 16
Wheelchair Clearance at Parking



Fig. 17
Wheelchair Clearance at Parking



Fig. 18
Wheelchair Clearance at Parking

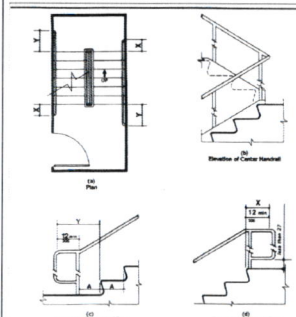


Fig. 18 Stair Handrails

NOTE:
A to the 2.8 is minimum handrail extension required at each handrail.
For the minimum handrail extension of 2.8 to allow the width of one handrail to overlap at each landing door.

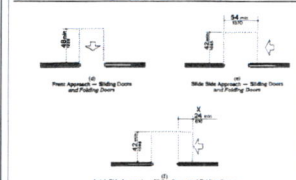


Fig. 19 Lock Side Approach - Stairs and Raising Doors

NOTE: All doors in this set comply with the clearance for front approach.

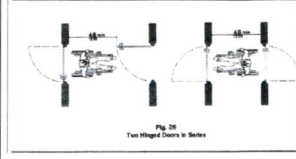


Fig. 20 Two Winged Doors in Series

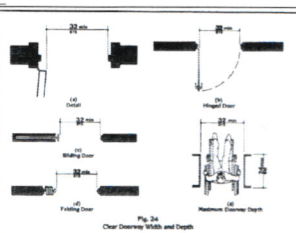


Fig. 21 Clear Opening Width and Depth

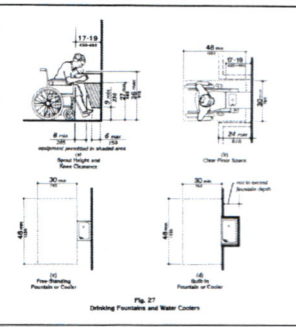


Fig. 22 Minimum Clearances of Floor with Raising Device

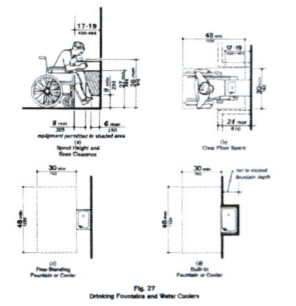


Fig. 23 Clearing Frontal and Water Closets

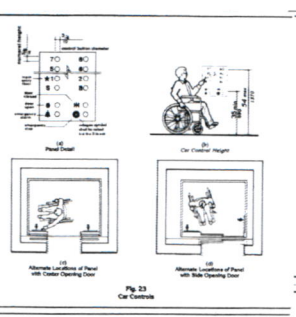


Fig. 24 Minimum Clearances of Floor with Raising Device

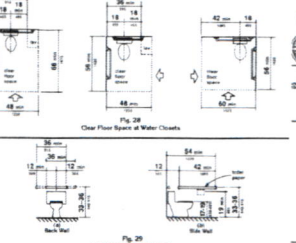


Fig. 25 Clear Floor Space at Water Closets

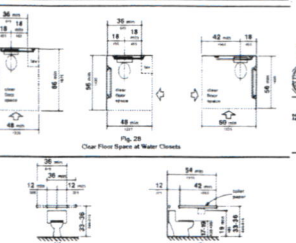


Fig. 26 Grab Bars at Water Closets

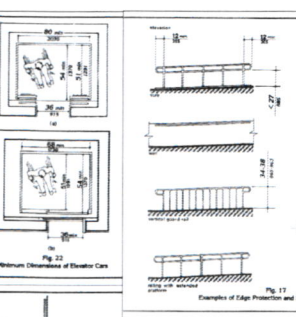


Fig. 27 Minimum Dimensions of Elevator Cars

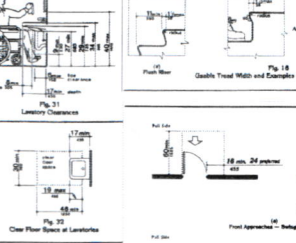


Fig. 28 Clear Floor Space of Water Closets

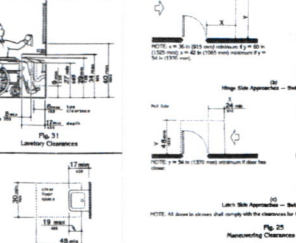


Fig. 29 Clear Floor Space of Lavatories

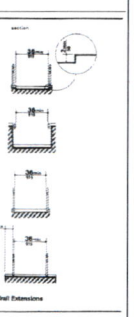


Fig. 30 Examples of Edge Protection and Handrail Extensions

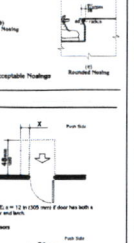


Fig. 31 Clearing Frontal and Water Closets

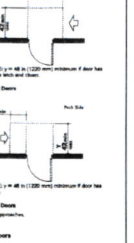


Fig. 32 Clearing Frontal and Water Closets

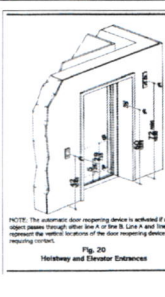
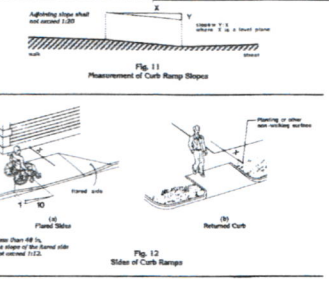
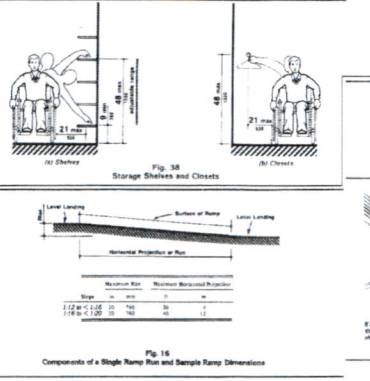
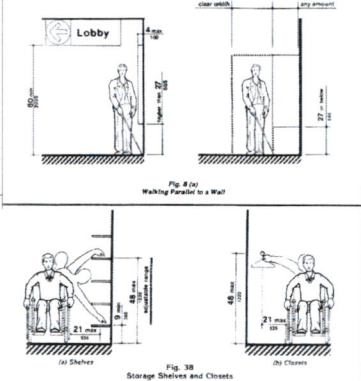
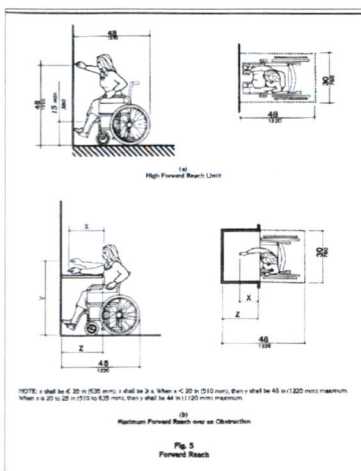
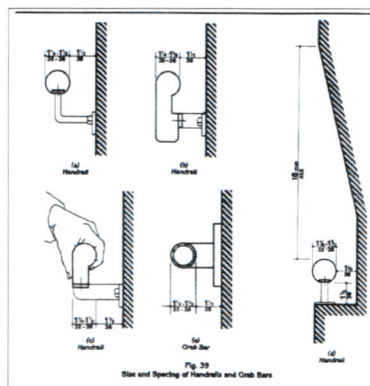
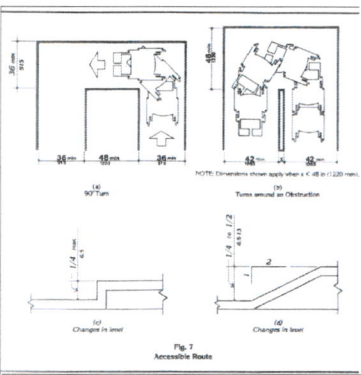
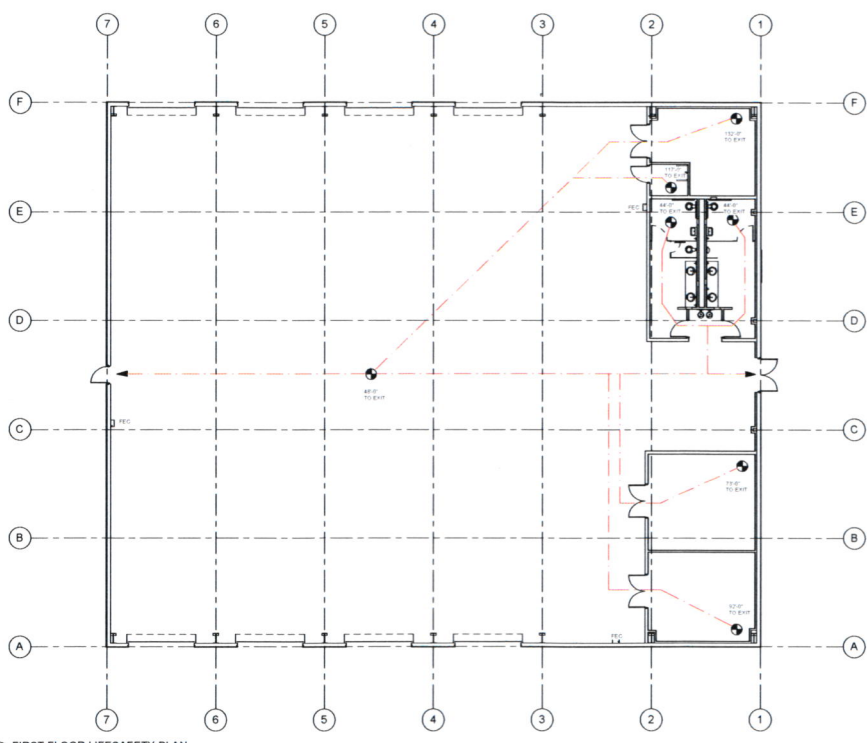


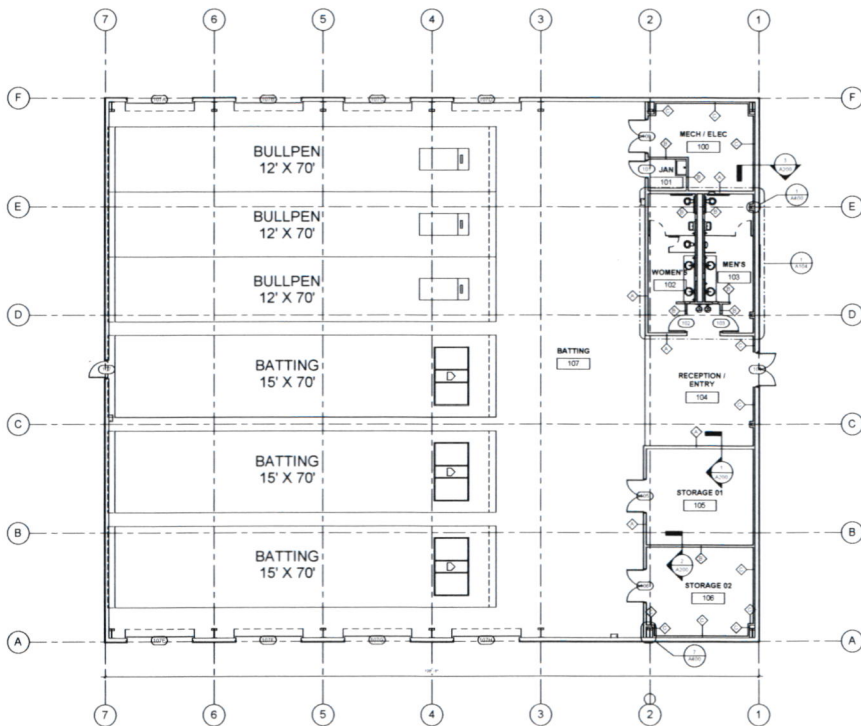
Fig. 14 Components of a Single Ramp Run and Sample Ramp Dimensions

Maximum Rise	Maximum Run	Maximum Horizontal Projection
1:12 or < 1:20	30	360
1:16 or < 1:20	30	360



1 FIRST FLOOR LIFESAFETY PLAN
 1/10 SCALE: 1/8"=1'-0"

LIFESAFETY LEGEND	
	POINT OF EGRESS
	EGRESS PATH
	POINT OF EXIT
	FIRE EXTINGUISHER CABINET



1. FIRST FLOOR PLAN
SCALE: 1/8" = 1'-0"



architecture + sustainability
720 bayfront parkway
suite 200
pensacola, fl 32502
t 850.432.0750
f 850.433.0908
baydesign.com

SEAL

Steve Jorgensen, FAIA
FL #09653, AL#2676
CA#04031518
MS#04130, COM#00232
AZ#066438

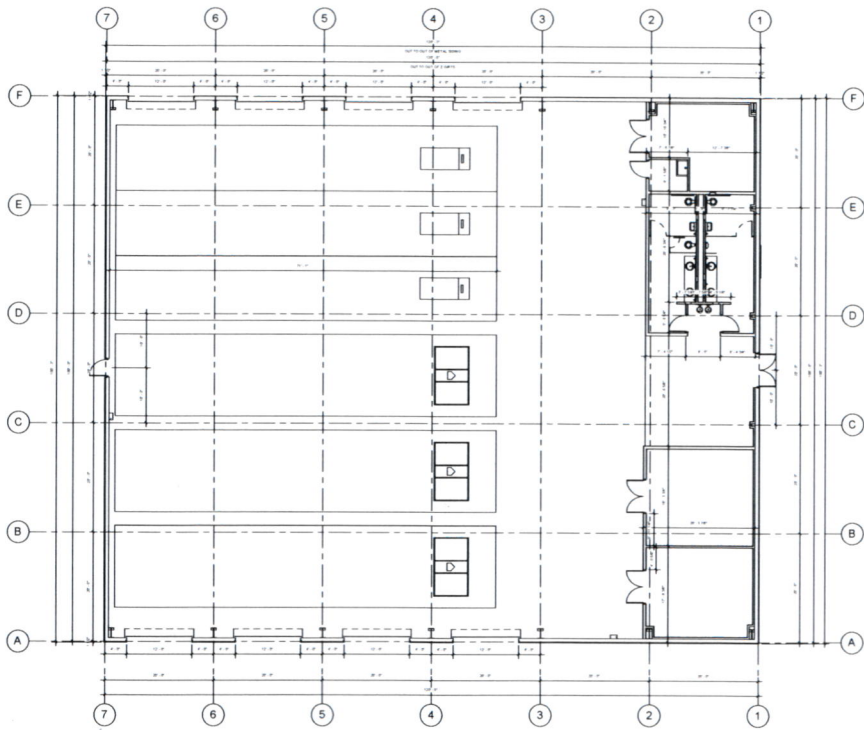


PROJECT:
NORTHWEST FLORIDA STATE COLLEGE
Indoor Pitching & Hitting Facility
100 E. College Blvd.

SHEET TITLE:
FIRST FLOOR PLAN

PROJECT NO.	1792
DATE	8.22.2018
OWNER	NSFC
SUBMISSION	PERMIT SET
REVISION	

SHEET
A101



1 FIRST FLOOR DIMENSION PLAN
SCALE: 1/8" = 1'-0"



architecture + sustainability
720 bayshore parkway
suite 200
panama city, FL 32302
T 850.432.0706
F 850.433.0908
baydesign.com

SEAL

Steve Jernigan, FAIA
FLORIDA ARCHITECT
CAREER 151516
MSBA150, COM#00232
ADR#66436

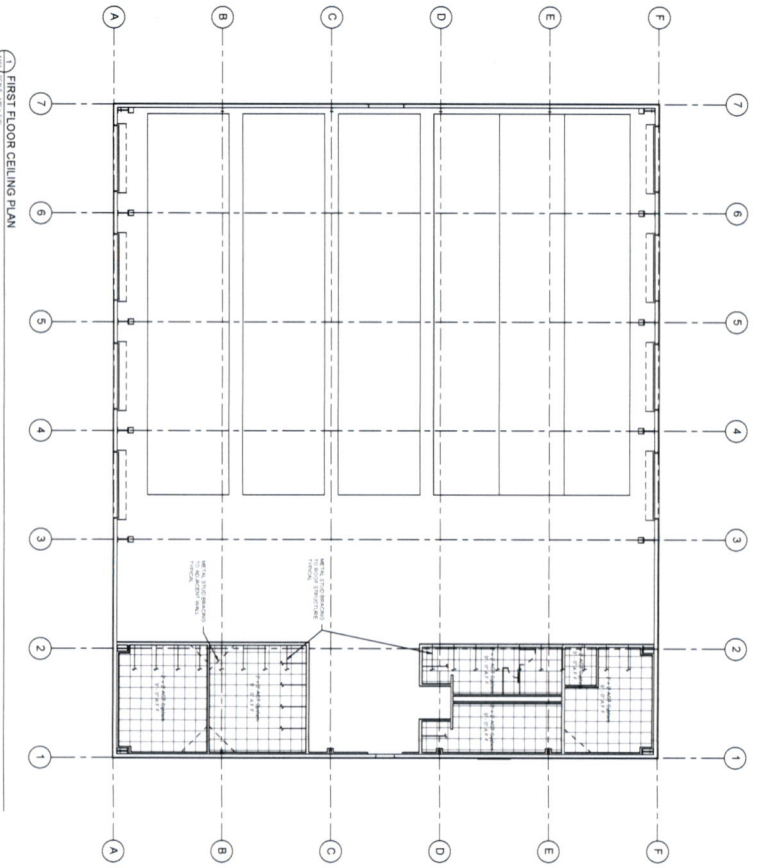


PROJECT:
NORTHWEST FLORIDA STATE COLLEGE
Indoor Pitching & Hitting Facility
100 E. College Blvd.

SHEET TITLE:
FIRST FLOOR DIMENSION PLAN

PROJECT NO.	7792
DATE	8.22.2008
OWNER	NSAF CC
SUBMISSION	PERMIT SET
REVISION	

SHEET
A102



FIRST FLOOR CEILING PLAN



ARCHITECTURE + INTERIORS
 7230 W. UNIVERSITY BLVD., SUITE 200
 TAMPA, FL 33611
 TEL: 813.455.0700
 WWW.BAYDESIGNN.COM

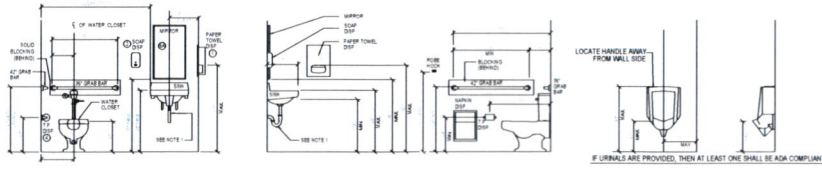
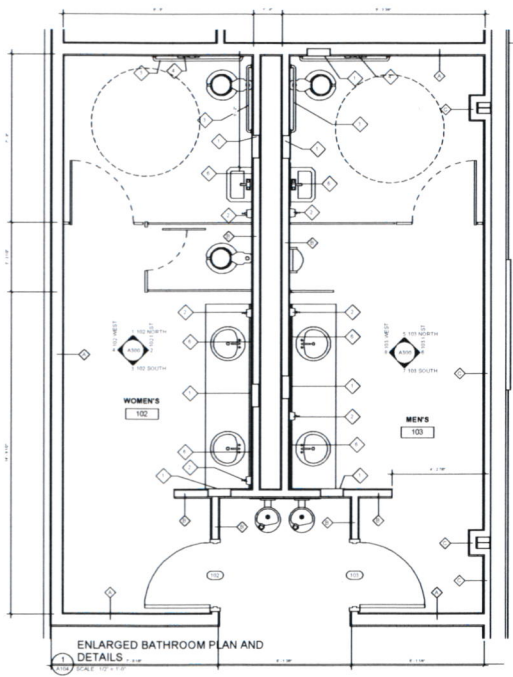
PROJECT
NORTHWEST FLORIDA STATE COLLEGE
Indoor Pitching & Hitting Facility
 100 E. College Blvd.



SHEET TITLE
FIRST FLOOR REFLECTED CEILING PLAN

DATE: 11.17.2011
 DRAWN BY: JMM
 CHECKED BY: JMM
 APPROVED BY: JMM

SHEET
A103

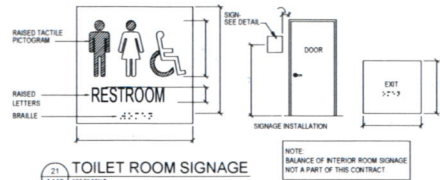


NO.	DESCRIPTION	MODEL	REMARKS
1	PAPER TOWEL DISPENSER	BRANDLEY 1245-1 (800 PRE-TRIMMED)	DISPENSER HANDLE HEIGHT 48" AFF
2	SOAP DISPENSER	BRANDLEY 1192	MOUNTING HEIGHT AFF UP TO BOTTOM FOR FRONT APPROACH
3	SPRINK BARR	BRANDLEY 1171 (20" x 18" x 4")	MOUNTING HEIGHT TOP OF BARR 12" AFF
4	TOILET TISSUE DISPENSER	BRANDLEY 1204	MOUNTING HEIGHT TO CENTERLINE AFF
5	COAT HOOK	BRANDLEY 1112	MOUNTING HEIGHT 54" CENTERLINE AFF FOR PARALLEL APPROACH & 48" FOR FRONT APPROACH
6	MIRROR	BRANDLEY 120-1192	MOUNTING HEIGHT 48" AFF TO BOTTOM
7	SMARTWAY WASTE DISPOSAL	BRANDLEY 2725-11	MOUNTING HEIGHT 48" AFF TO CENTER

NOTES:
1. INSTALL LAVATORY FIXTURES IN THE US/BSI INC. SERIES AND RELIANT ON KIT OF APPROVED EQUAL.
2. PROVIDE RECESSED COVERS & OVER BARS & ACCESSORIES BIDDING TO BE O.A.S. THESE ITEMS.
3. OF FIRE RESISTANT TREATED WOOD.
4. COORDINATE WITH ARCHITECT'S HEIGHTS TO REQUIRED CLEARANCE & WATER CLOSET TANK.

20 TOILET ACCESSORY, MOUNTING HEIGHTS & SCHEDULE
SCALE: 1/4" = 1'-0"

21 BATHROOM ACCESSORY
SCALE: 1/4" = 1'-0"



21 TOILET ROOM SIGNAGE
SCALE: NOT TO SCALE

SEAL

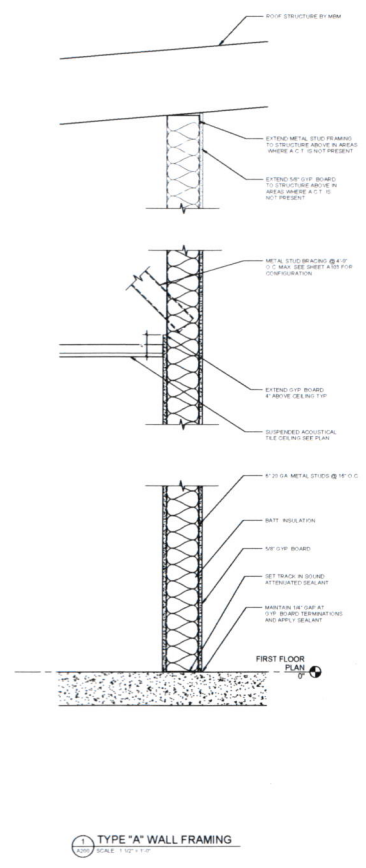
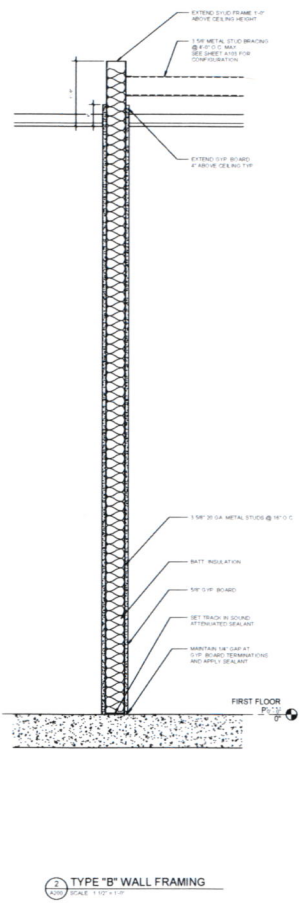
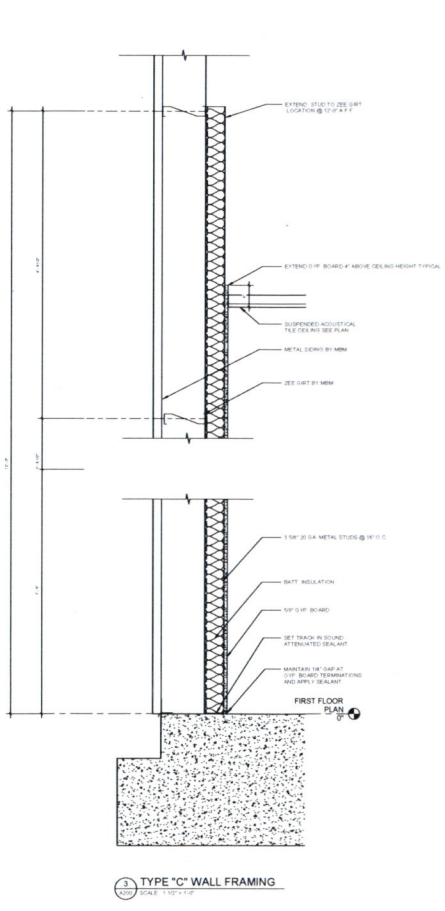
Steve Jensen, FAIA
 FLORIDA ARCHITECT
 CERT. NO. 1516
 MSH# 135, CCM#00232
 A2000

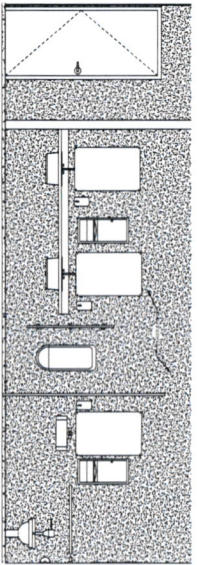
THE ARCHITECT
 REGISTERED ARCHITECT
 NORTHWEST
 FLORIDA
 STATE COLLEGE

PROJECT: NORTHWEST FLORIDA STATE COLLEGE
 Indoor Pitching & Hitting Facility
 100 E. College Blvd.
 SHEET TITLE: WALL TYPES

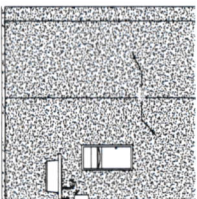
PROJECT NO.: 3783
 DATE: 8/22/2014
 DRAWN: TWP/SC
 CHECKED: PERMIT SET

SHEET
A200





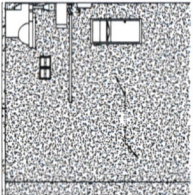
103 WEST
SCALE 1/8" = 1'-0"



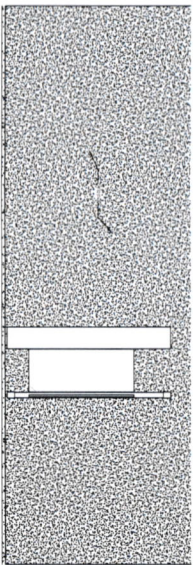
103 SOUTH
SCALE 1/8" = 1'-0"



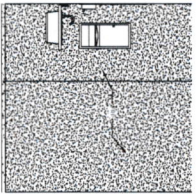
103 EAST
SCALE 1/8" = 1'-0"



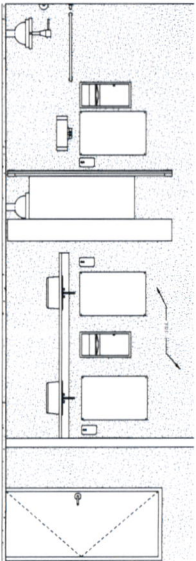
103 NORTH
SCALE 1/8" = 1'-0"



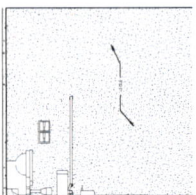
102 WEST
SCALE 1/8" = 1'-0"



102 SOUTH
SCALE 1/8" = 1'-0"



102 EAST
SCALE 1/8" = 1'-0"



102 NORTH
SCALE 1/8" = 1'-0"



ARCHITECTURE • INTERIORS
100 E. COLLEGE BLVD.
SUITE 200
TALLAHASSEE, FL 32306
850.833.0700
baydesign.com

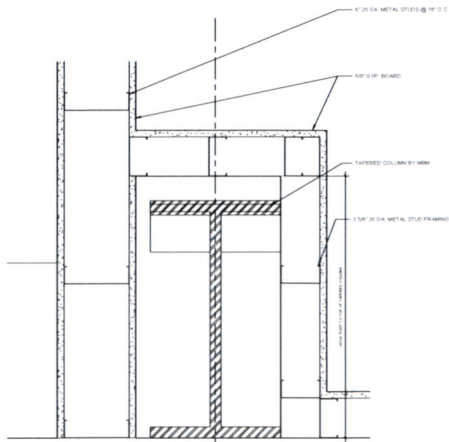
SEAL
Irene J. Jorgensen, FAIA
Principal Architect
L. Brent A. Albert
Principal Architect
K. Michelle Comarazzo
Principal Architect
TALLAHASSEE, FL
32306-3000
850.833.0700
baydesign.com



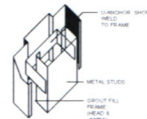
PROJECT
NORTHWEST FLORIDA STATE COLLEGE
Indoor Pitching & Hitting Facility
100 E. College Blvd.
SHEET TITLE
INTERIOR ELEVATIONS

NO.	DATE	BY	CHKD.
1	11/11/2010	IAJ	IAJ
2	11/11/2010	IAJ	IAJ
3	11/11/2010	IAJ	IAJ
4	11/11/2010	IAJ	IAJ
5	11/11/2010	IAJ	IAJ
6	11/11/2010	IAJ	IAJ
7	11/11/2010	IAJ	IAJ
8	11/11/2010	IAJ	IAJ
9	11/11/2010	IAJ	IAJ
10	11/11/2010	IAJ	IAJ

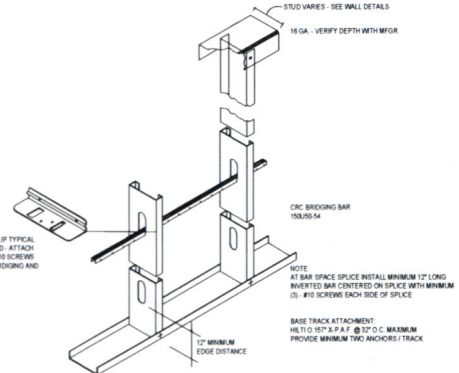
SHEET
A300



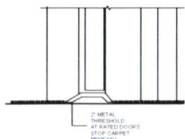
1 STUD FURRING @ TAPERED COLUMN
SCALE: 1/4" = 1'-0"



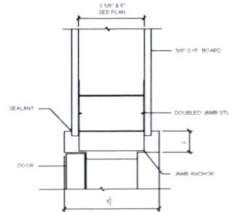
2 TYPICAL STUD ANCHOR
SCALE: 1/4" = 1'-0"



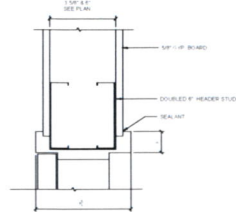
3 TYPICAL METAL STUD DETAIL
SCALE: 1/4" = 1'-0"



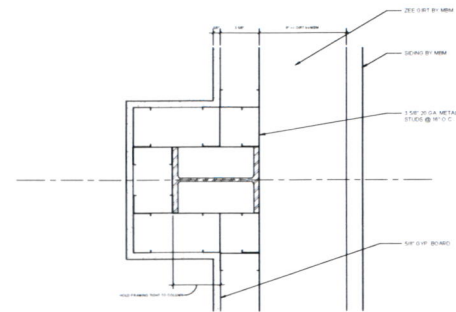
4 HOLLOW METAL DOOR SILL
SCALE: 1/4" = 1'-0"



5 HOLLOW METAL DOOR JAMB
SCALE: 1/4" = 1'-0"

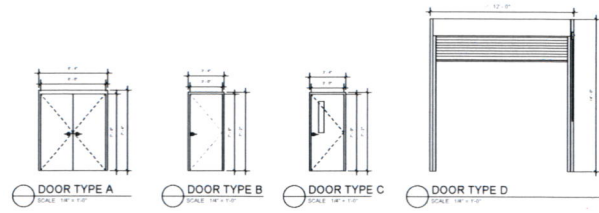


6 HOLLOW METAL DOOR HEAD
SCALE: 1/4" = 1'-0"



7 STUD FURRING @ COLUMN
SCALE: 1/4" = 1'-0"

DOOR FRAME AND HARDWARE SCHEDULE													
Mark	Location	Door Type	Dimensions			Door Material	Frame Material	Detail (See sheet A400)			Hardware Set	Fire Rating	Comments
			Width	Height	Thickness			Head	Jamb	Threshold			
FIRST FLOOR PLAN													
100		A	8'-0"	7'-0"	1-3/4"	HOLLOW METAL	HOLLOW METAL 2	3	4				
101		B	3'-0"	7'-0"	1-3/4"	WOOD	HOLLOW METAL 2	3	4				
102		B	3'-0"	7'-0"	1-3/4"	WOOD	HOLLOW METAL 2	3	4				
103		B	3'-0"	7'-0"	1-3/4"	WOOD	HOLLOW METAL 2	3	4				
104		A	8'-0"	7'-0"	1-3/4"	HOLLOW METAL	HOLLOW METAL 2	3	4				
105		A	8'-0"	7'-0"	1-3/4"	HOLLOW METAL	HOLLOW METAL 2	3	4				
106		A	8'-0"	7'-0"	1-3/4"	HOLLOW METAL	HOLLOW METAL 2	3	4				
107		C	3'-0"	7'-0"	1-3/4"	HOLLOW METAL	HOLLOW METAL 2	3	4				
107A		D	12'-0"	14'-0"									
107B		D	12'-0"	14'-0"									
107C		D	12'-0"	14'-0"									
107D		D	12'-0"	14'-0"									
107E		D	12'-0"	14'-0"									
107F		D	12'-0"	14'-0"									
107G		D	12'-0"	14'-0"									
107H		D	12'-0"	14'-0"									



ROOM FINISH SCHEDULE													
Number	Name	Floor Material	Base Material	North		East		South		West		Ceiling	
				Finish	Material	Finish	Material	Finish	Material	Finish	Material	Material	Finish
102	WOMENS			FRP		FRP		FRP		FRP		ACT	9'-0"
104	RECEPTION/ENTRY											ACT	20'-0"
106	STORAGE 01											ACT	9'-0"
103	MENS			FRP		FRP		FRP		FRP		ACT	9'-0"
100	MENR/ELEC											ACT	9'-0"
101	JAN											ACT	9'-0"
106	STORAGE 02											ACT	9'-0"
107	BATTING											ACT	20'-0"