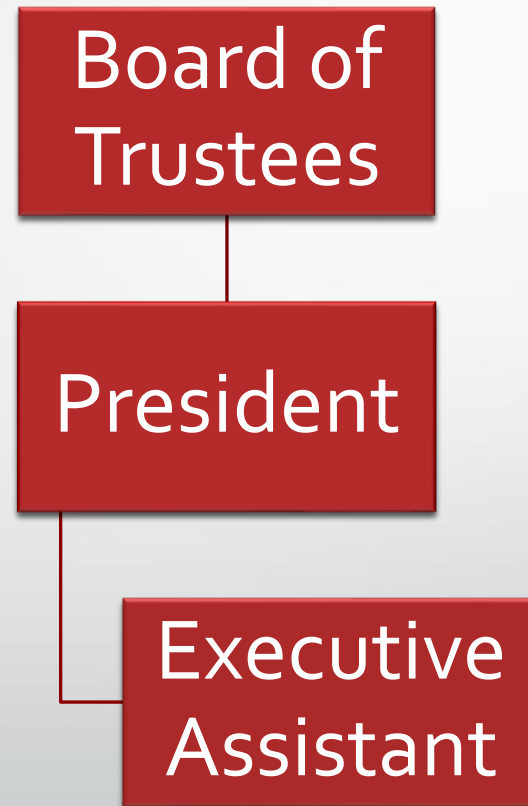




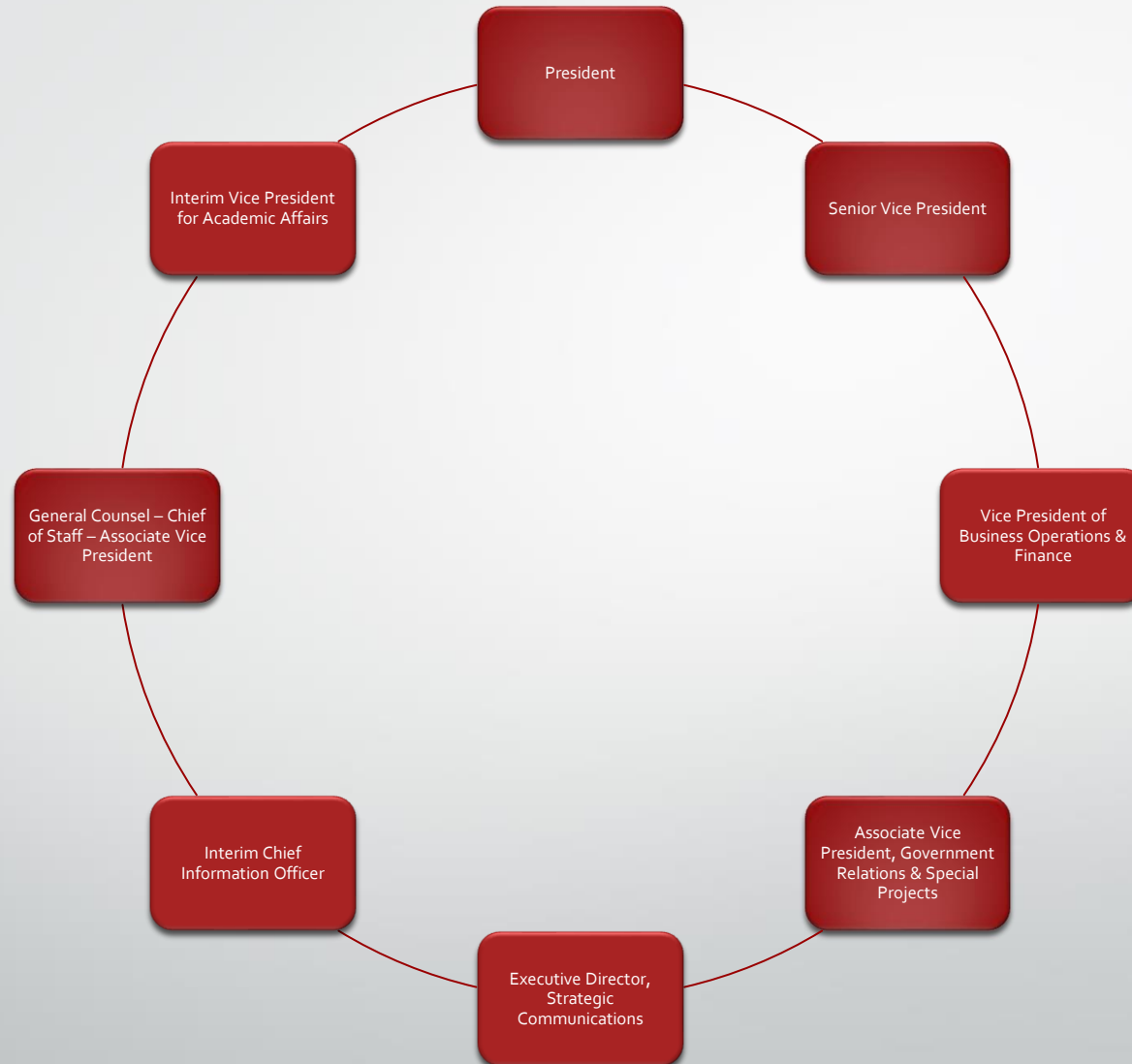
Northwest Florida State College

Organizational Charts

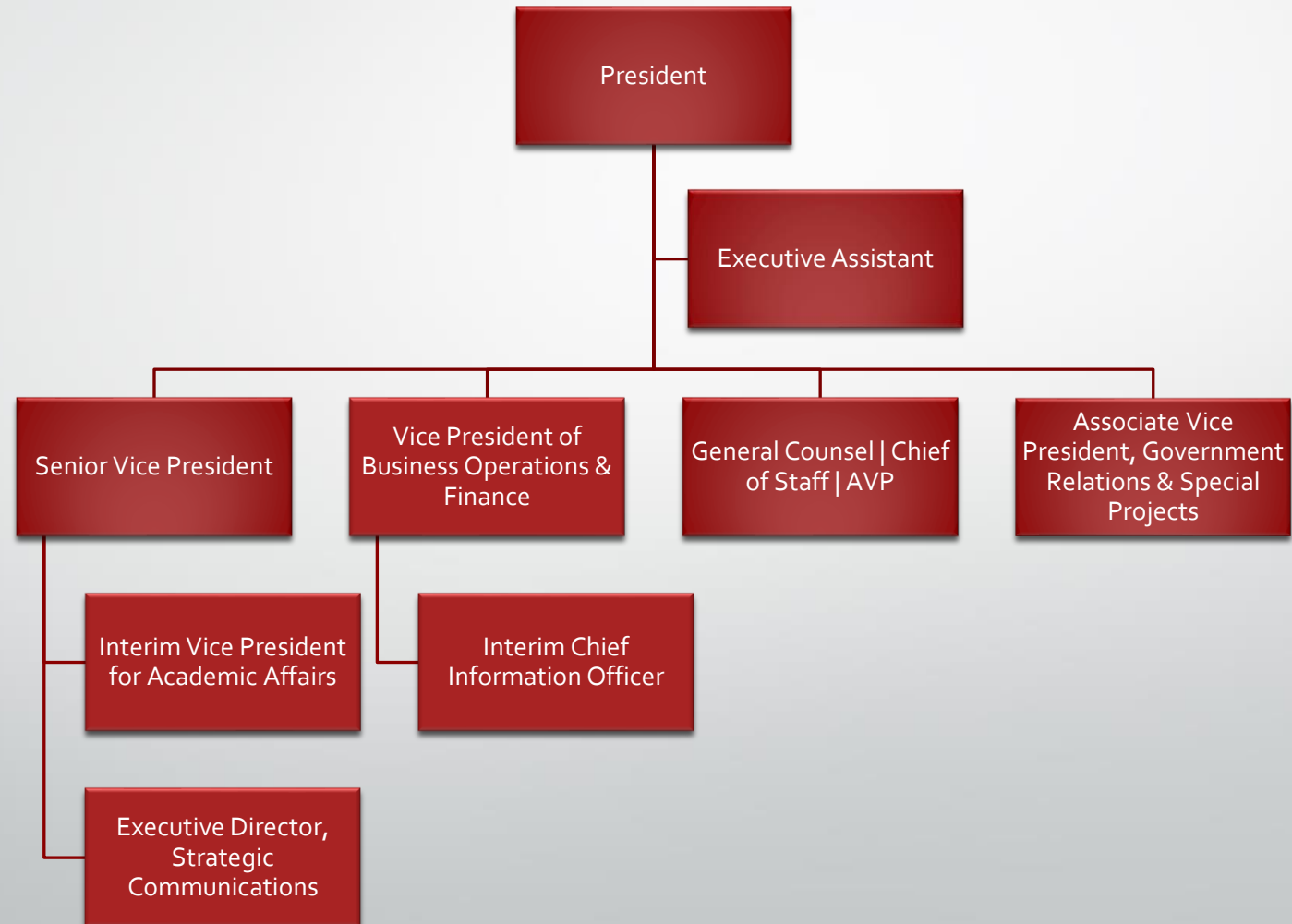
Board of Trustees & President's Office



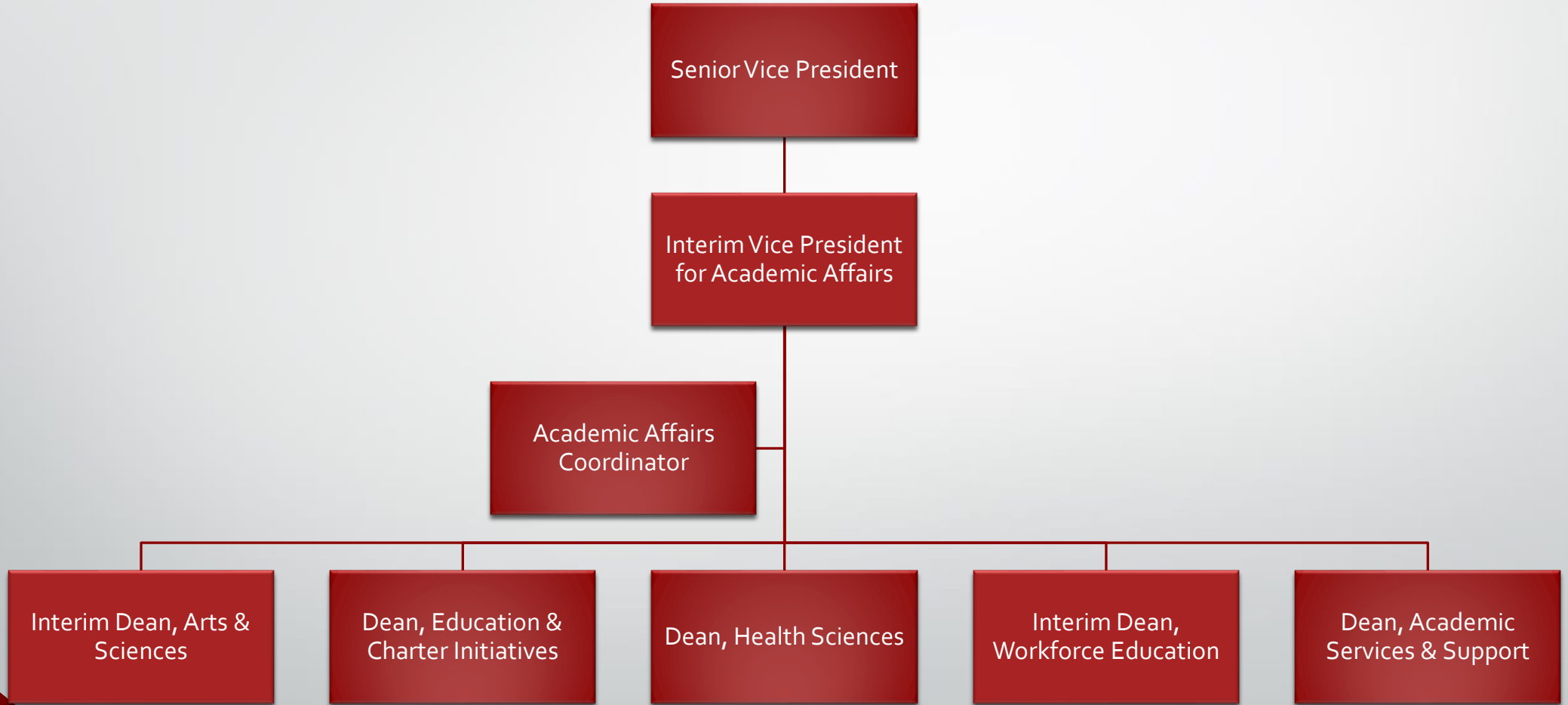
Leadership Cabinet



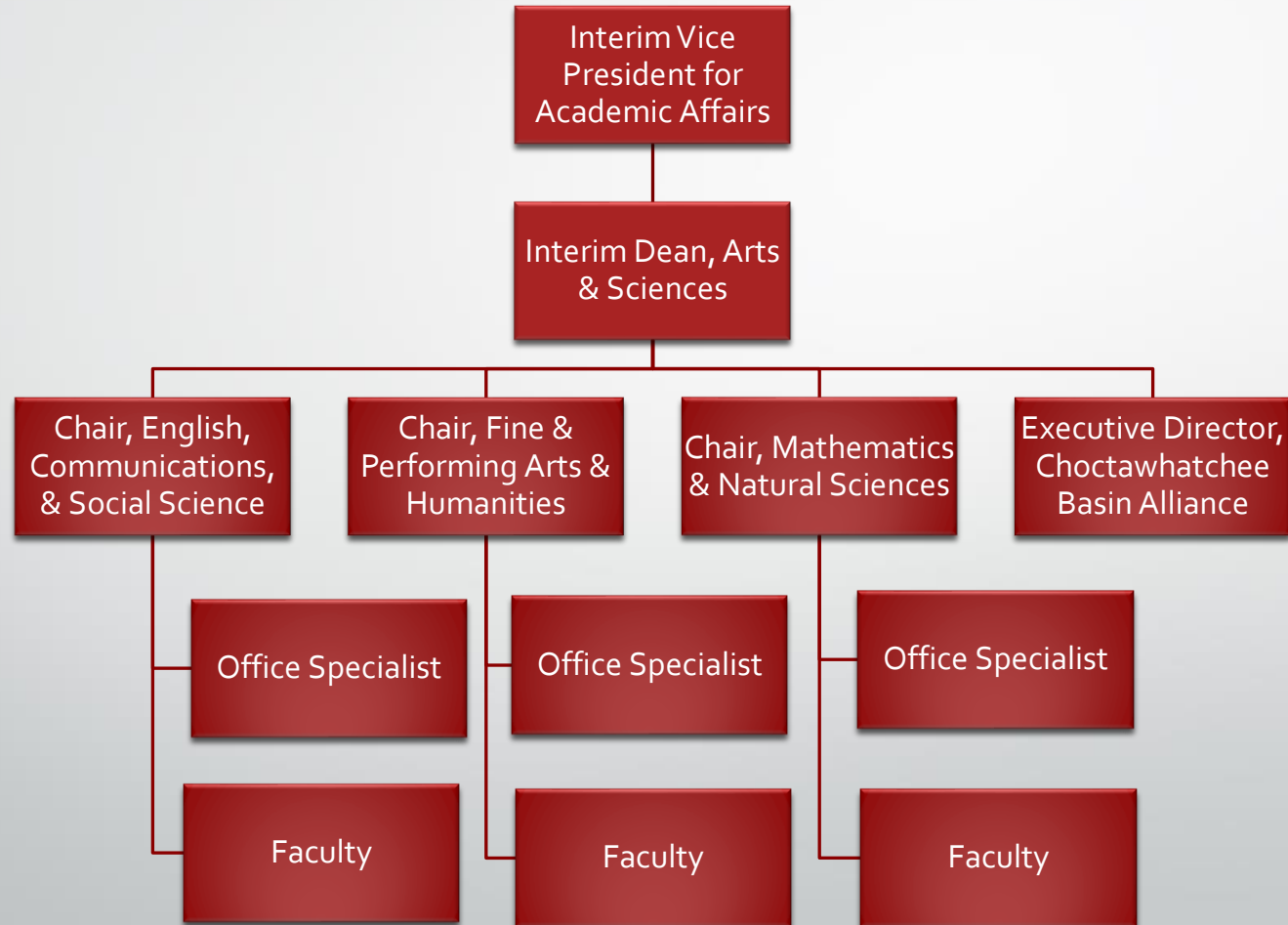
President's Direct Reports



Academic Affairs

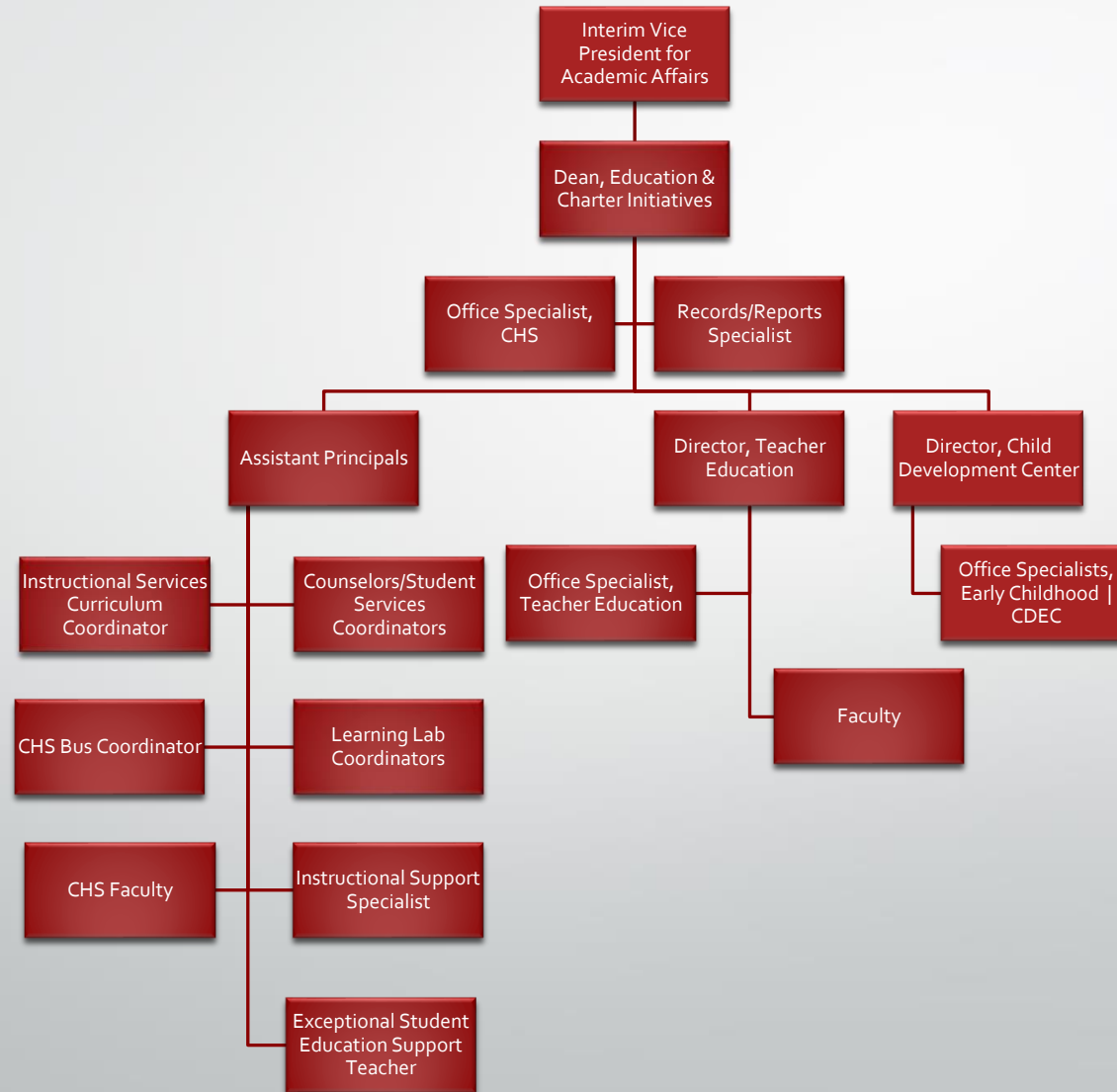


Academic Affairs Arts & Sciences

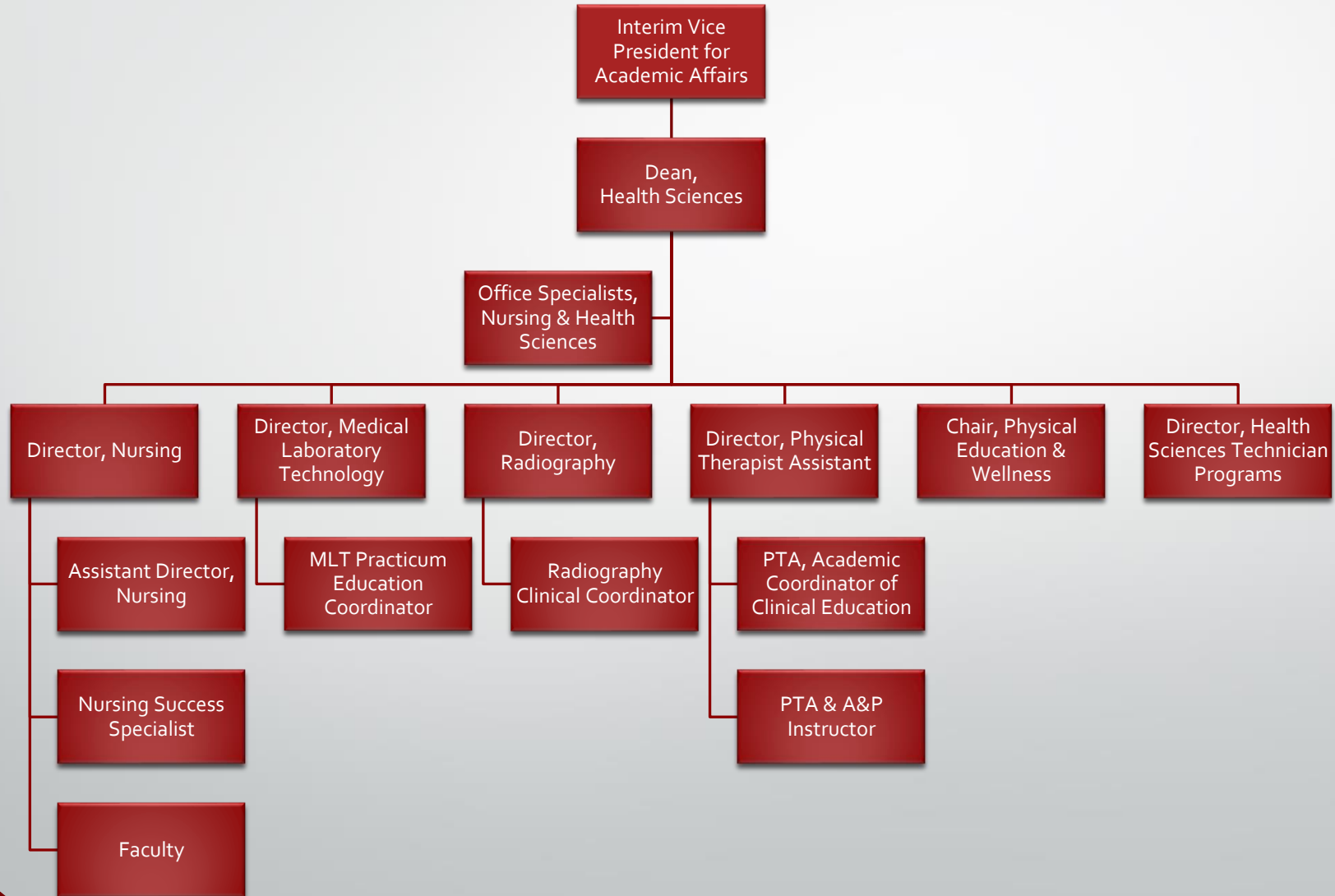


Academic Affairs

Education and Charter Initiatives

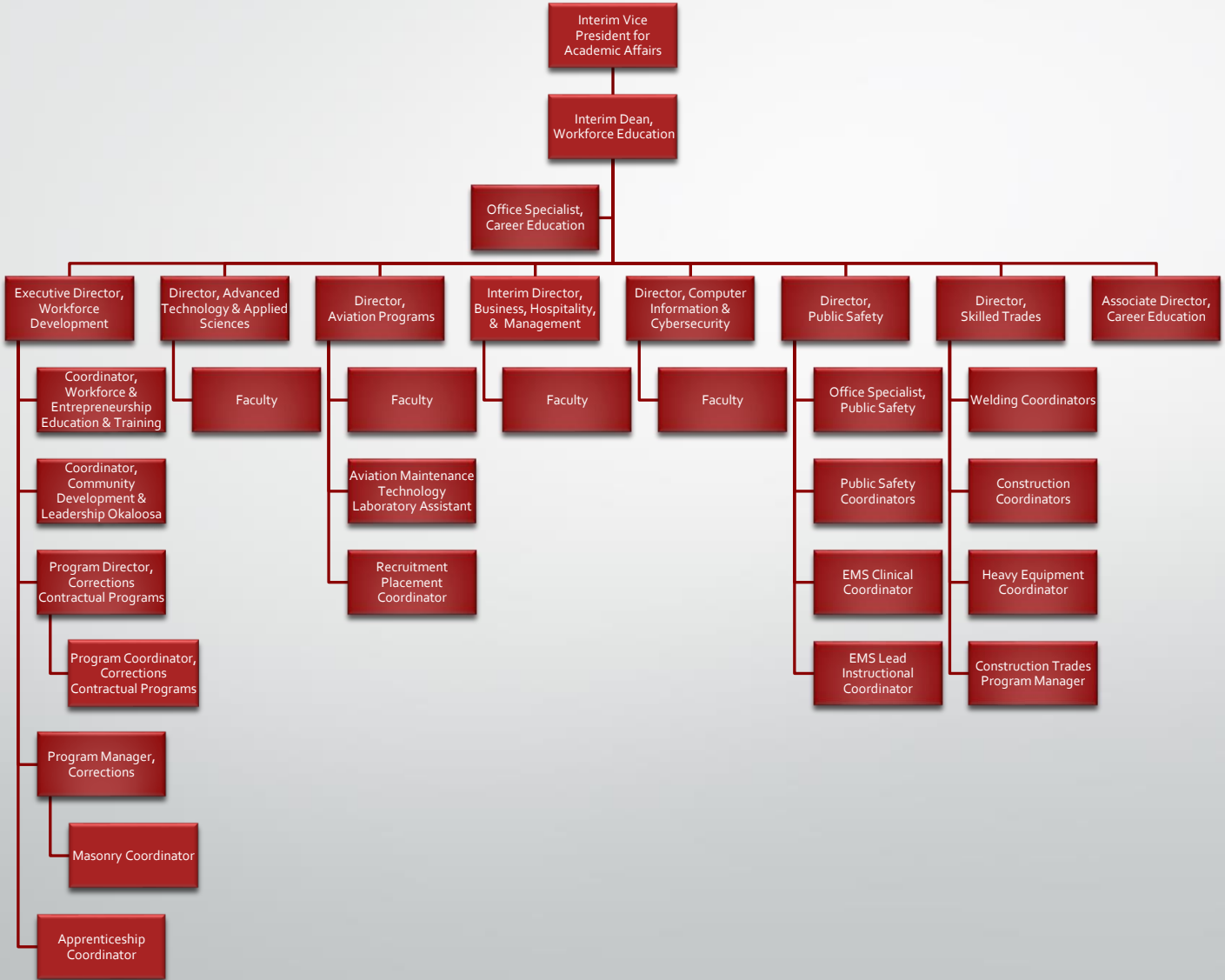


Academic Affairs Health Sciences



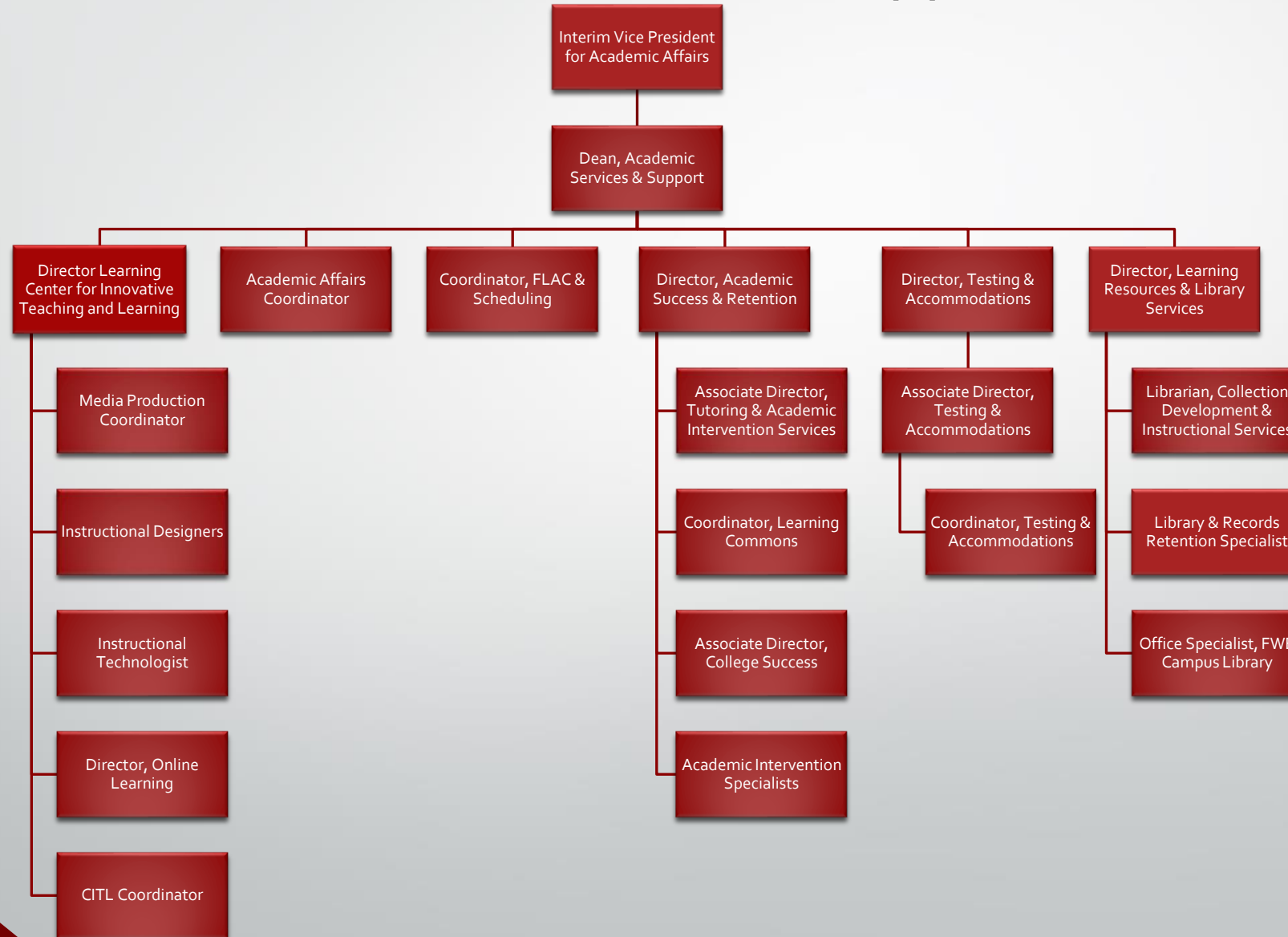
Academic Affairs

Workforce Education

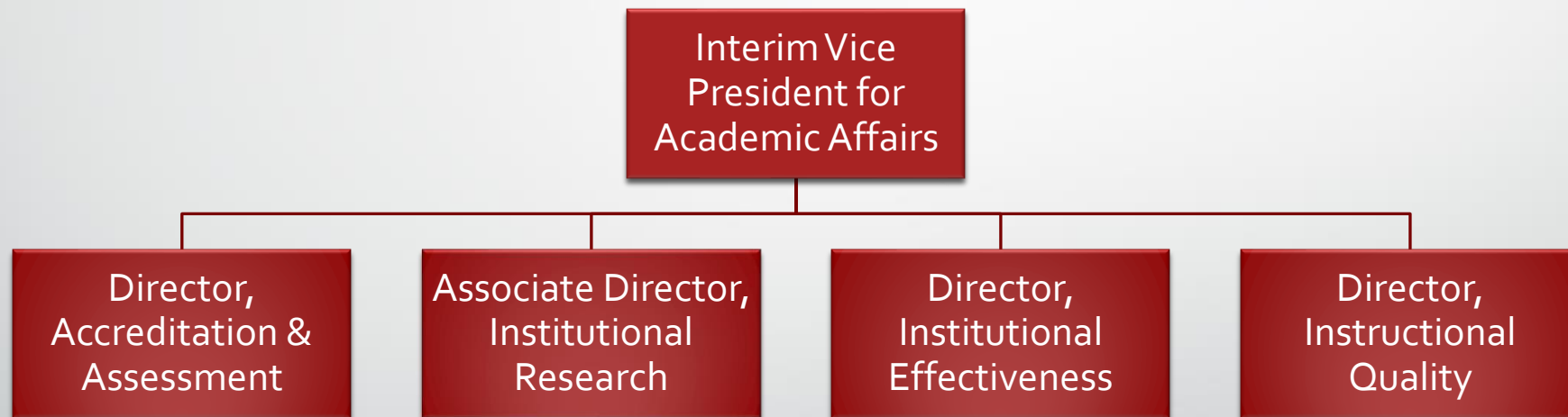


Academic Affairs

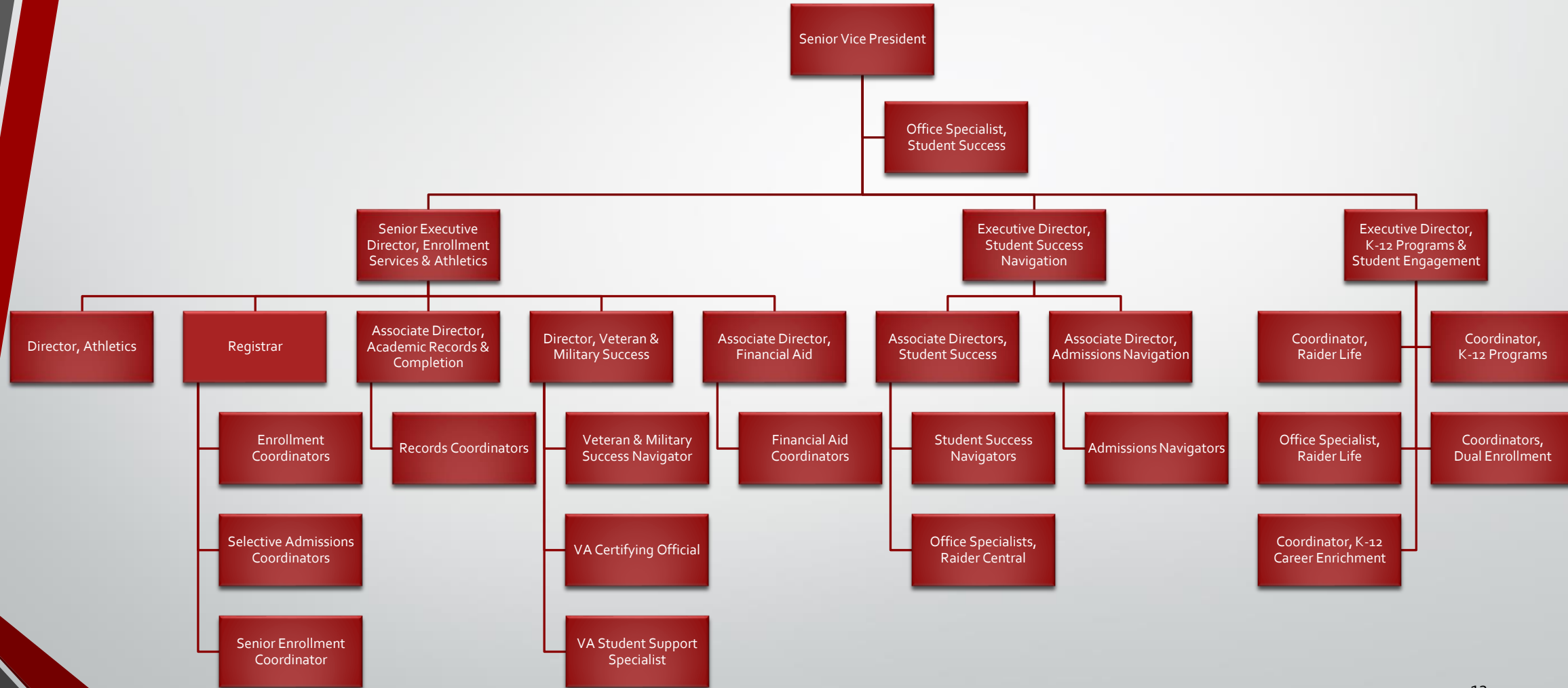
Academic Services & Support



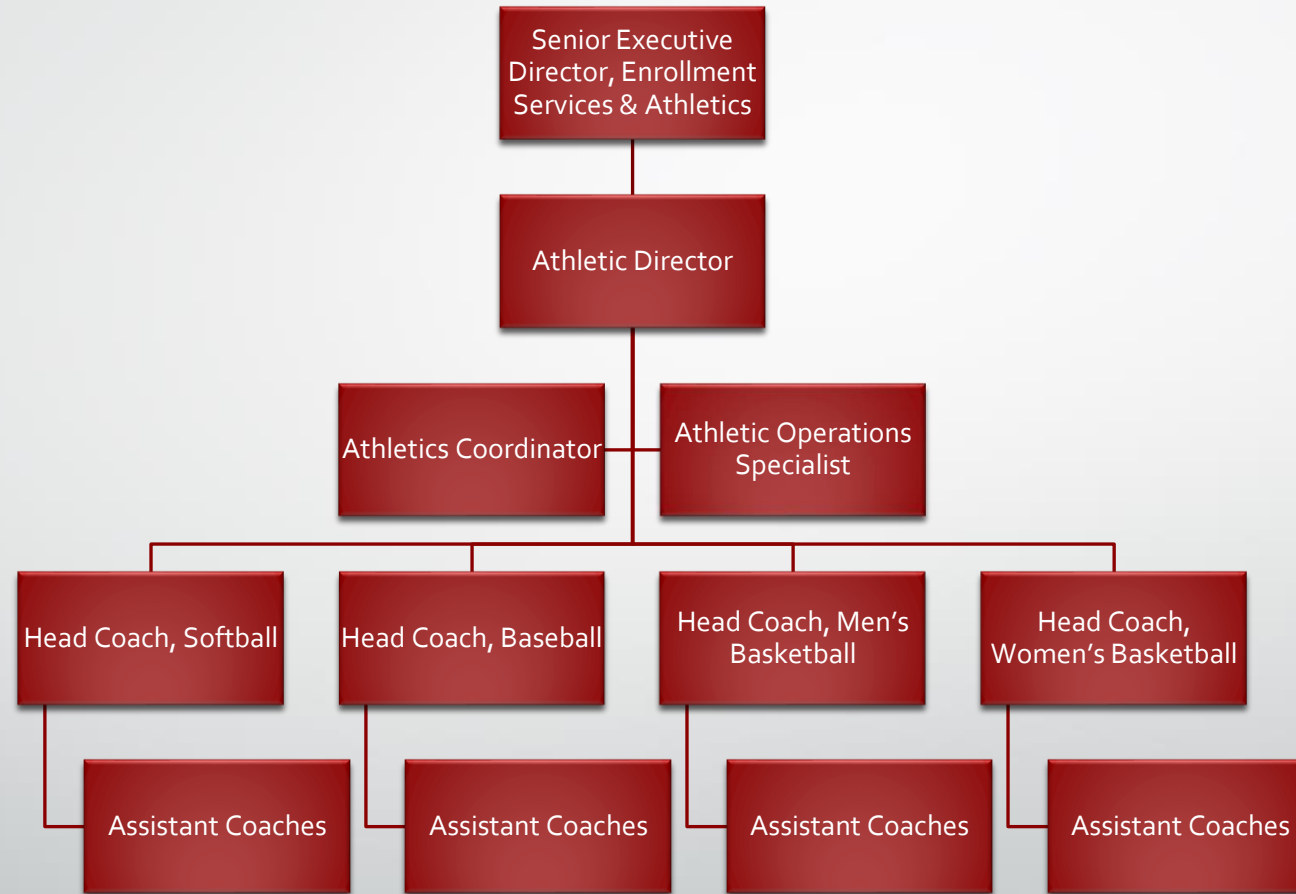
Academic Affairs Institutional Research



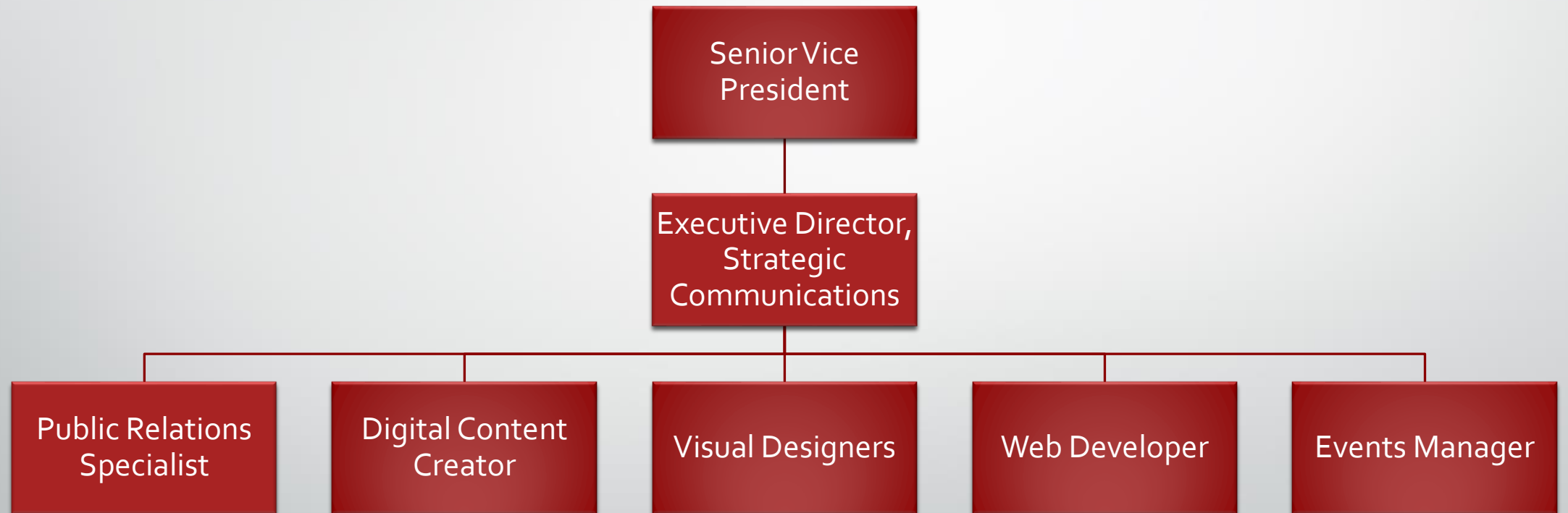
Student Services



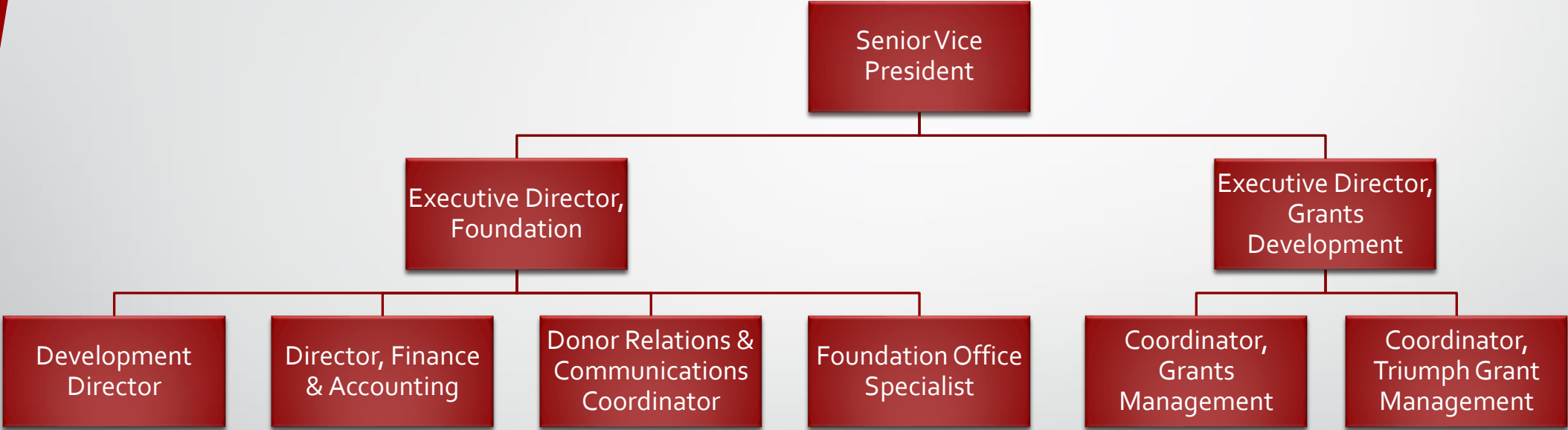
Raider Athletics



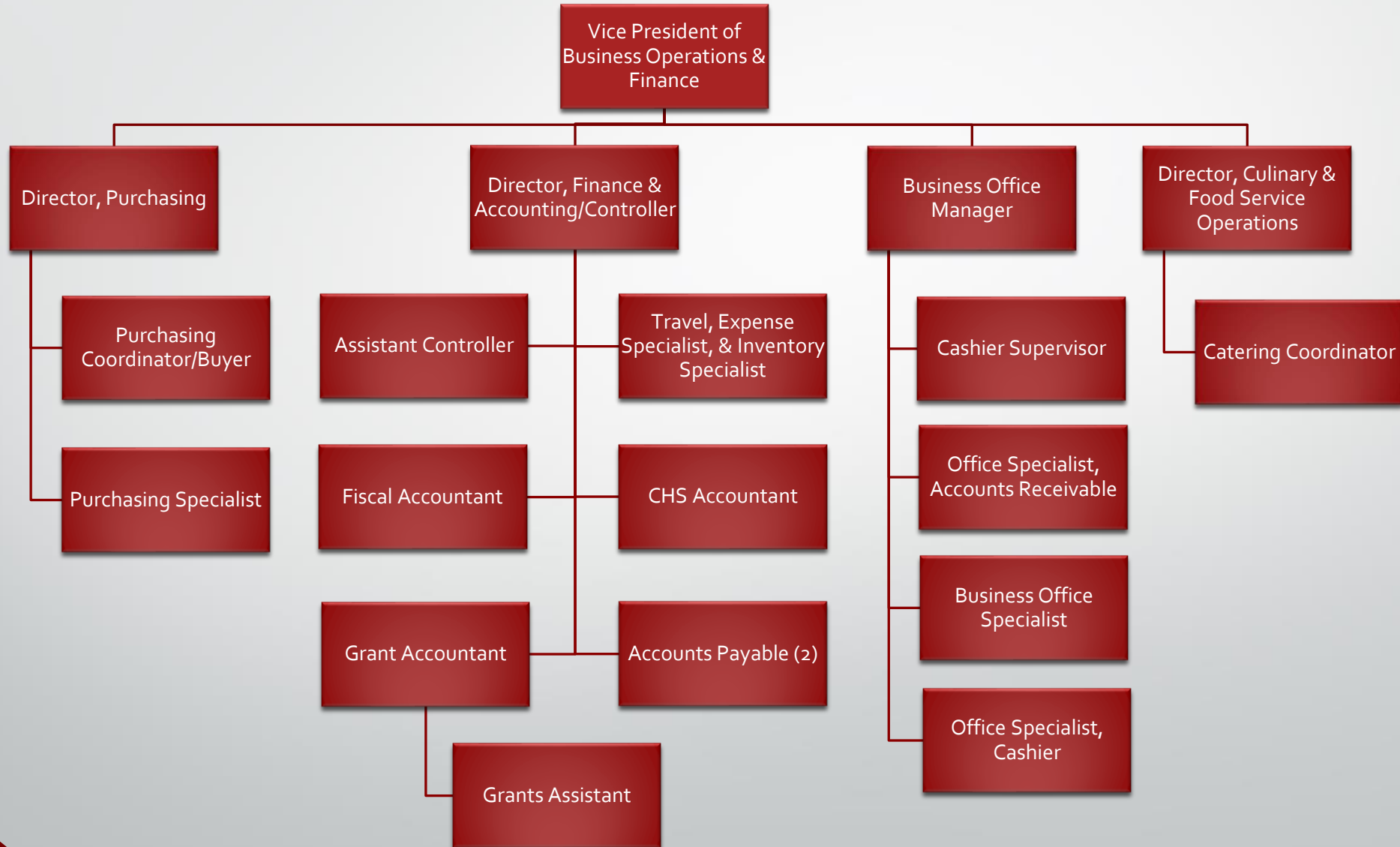
Strategic Communications



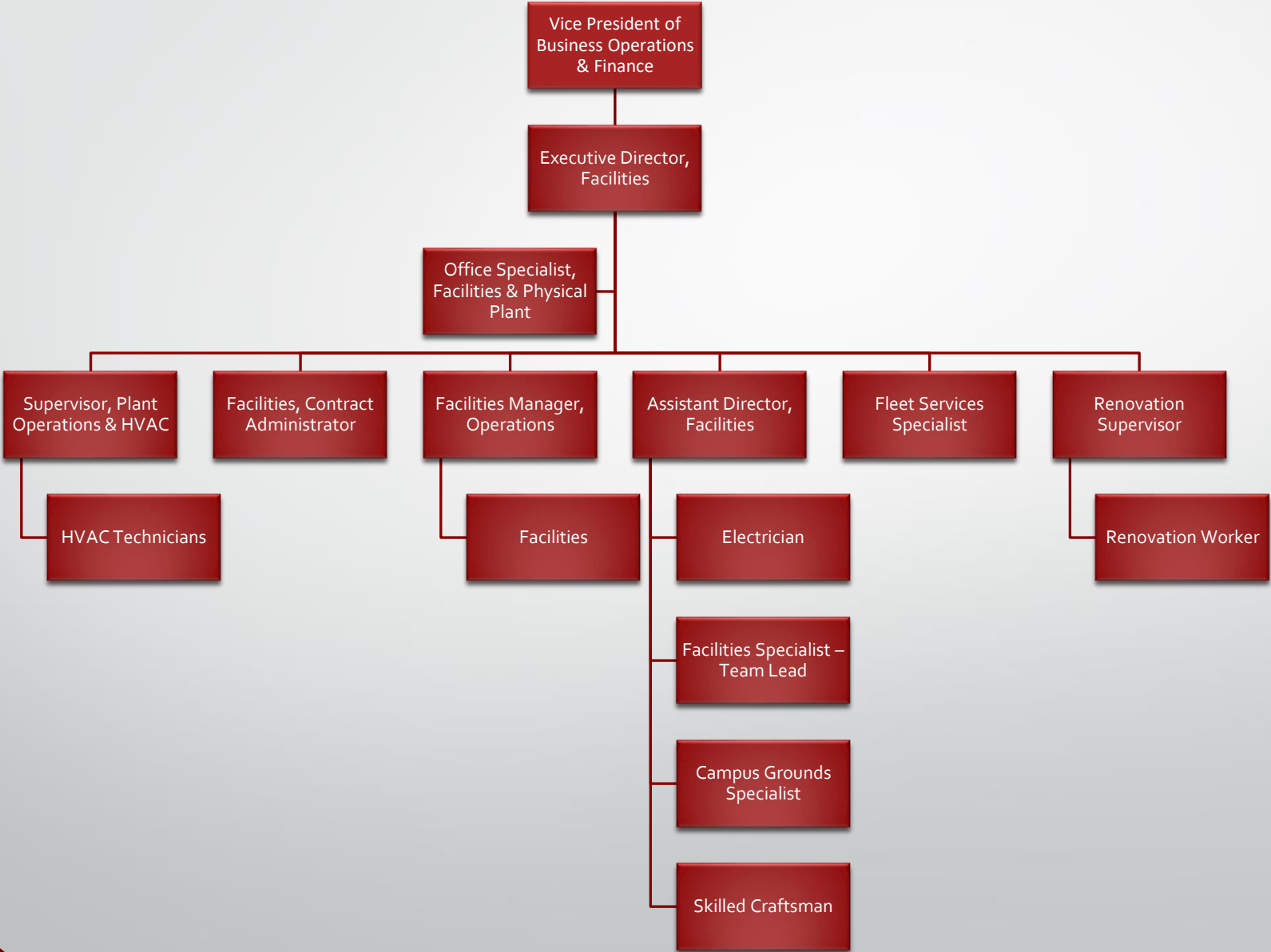
Northwest Florida State College Foundation and Grants



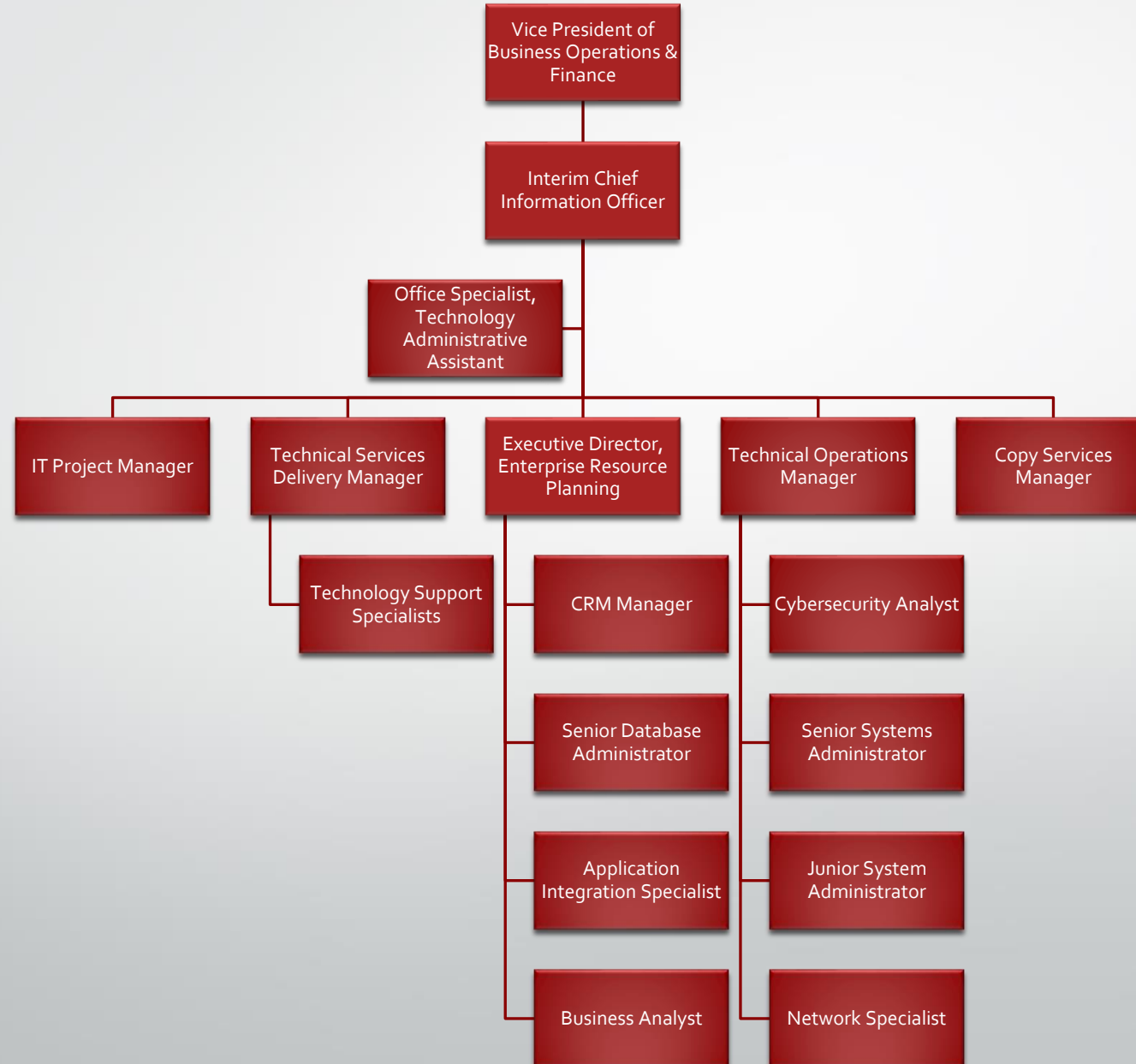
Business Operations & Finance



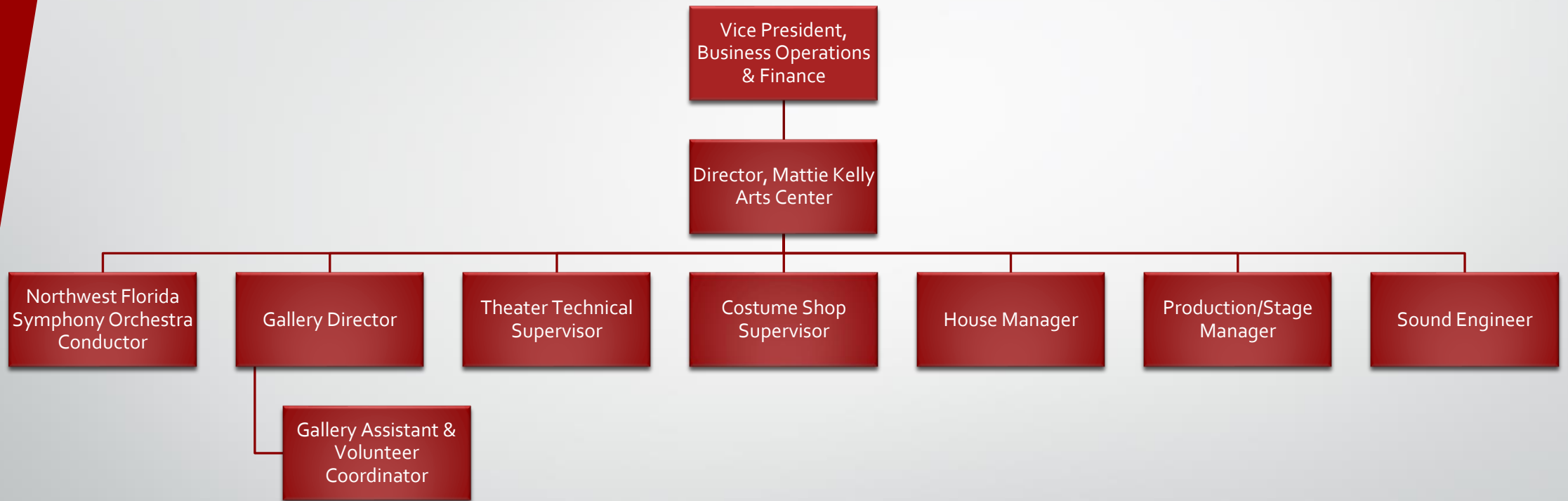
Facilities



Information Technology



Mattie Kelly Arts Center



General Counsel, Human Resources, and Campus Safety

